

# MOTHERHOOD IN KITGUM

Response to improving maternal and child health in Kitgum district



# KITGUM MATERNITY AND MEDICAL CENTER

- Kitgum Maternity and Medical Center (KMMC) is a registered community-based organization (CBO) with registration number 112174. KMMC was formed by a group of doctors and midwives from Kitgum and neighboring districts with the aim of providing quality health services to the poor.
- KMMC is located in Kitgum Municipality, Central Division Central ward; plot 10 Ogwok Road, near Centenary Bank.

# MISSION AND CAPABILITIES

- **MISSION:** To provide quality integrated health care services that protect and improve the lives of the poor community in Kitgum district.
- **Capabilities:** to be the model health facility, a center of excellence in providing comprehensive high-tech health services.

# MCH SITUATION

- Maternal and child morbidity accounts for the highest burden of disease in northern Uganda.
- More than 75% of the years of life lost due to premature deaths are due to ten preventable diseases (UDHS 2016/07).
- Peri-natal and maternal conditions account for 20.4 percent, malaria for 15.4 percent, acute lower respiratory tract infections for 10.5 percent, and HIV/AIDS for 9.1 percent.

# MATERNAL HEALTH INFANTIE IN KITGUM DISTRICT

- Kitgum is among the districts listed by the Ministry of Health with the highest infant and maternal mortality rates.
- infant mortality is 279 per 1000 live births.
- ITALY: 3/1000 births.
- maternal mortality is 536 per 100,000 live births.
- ITALY: 9 cases / 100,000 live births.

# THE MAIN REASONS FOR THIS SITUATION

- Lack of sufficient drugs and human resources at public health centers and inadequate services to meet MCH needs.
- Inadequate medical equipment for effective response to MCH emergencies (in both public and private centers).
- For example, the report shows that only 2 of the 12 health centers located in the district offer reproductive health services and handle emergency cases involving pregnant women.

# The KMMC TO REACT project:

- Improve the availability, access, and utilization of quality maternal and newborn care services, particularly at the grassroots level.
- Strengthen human resources and develop capacity to provide skilled maternal and newborn health care.
- Strengthen the coordination and management of maternal and newborn care services.
- Empower local communities to ensure a continuum of care between family and health facility.

# EXPECTED RESULTS

- Reduced the mortality and morbidity rate for children under five from 17% to 5% by 2022.
- Reduced the maternal mortality and morbidity rate from 40% to 20%; by 2022.
- Improving access to essential medical services.
- At least 80 percent of children under age 5 with diarrhea, pneumonia, or malaria have access to treatment.
- Access oral rehydration salts and Zinc within 24 hours.
- Improve immunization coverage to 85 percent and introduce human papilloma virus and pneumococcal virus (HPV) vaccines.
- Train professionals for maternal and child health care.



# Gaps IN THE STRUCTURE

- Inadequate funding to support the procurement of medical supplies and human resources.
- Inadequate medical equipment to meet the high demand for MCH in the district.
- Inadequate funds to establish the health worker training center.

# CORE VALUES

- Our core values focus on professionalism and continuous capacity building, the poor and sustainability, gender responsiveness, responsibility, respect, teamwork, equity research, and health.
- SUSTAINABILITY
  - Small Fees to Pay.
  - Community health insurance.
  - Scholarships

# Staff capacity

28 staff members report to the center :

- 2 physicians 1 coordinating midwife and 1 medical officer,
- 2 Clinical Officers, 5 midwives, 2 nurses,
- 1 anesthetic technician and 1 sonographer.
- 2 laboratory assistants, 1 administrator,
- 2 cleaners, 1 cook,
- 6 community liaison facilitators, 1 security guard,

# The support offered through ongoing collaboration

- Ability to train staff on national health services.
- Medical insurance, international medical insurance, and Nakasero medical insurance.
- Treatment of beneficiaries with agreed medical scheme.
- Collaboration with St. Joseph's Hospital, Kalongo Hospital and Kitgum General Hospital.
- Supervision support and mentoring.

# Use/security of funds

- Managing a Bank Account.
- Activating a Sustainable Financial Policy.
- Auditing the financial management system.

## **Long-term plans.**

- Completion of St. Mark's midwifery and nursing school.
- Transform KMMC into maternity and children's hospital.

# WHAT KMMC CAN DO

- The bed occupancy rate is 80% per month.
- Coverage areas are 60% from districts in northern Uganda.
- Accessibility is 90%.
- Functionality is 100%.
- Good quality services.
- Started support projects (pig farms, social events and training school).
- Created employment for people.

# The challenges

- Limited resources/funding challenges.
- Inadequate modern medical equipment.
- Staff turnover due to low salary Request and plan.
- Support for maternal and child project.
- Completion of the school project.
- Equipping the medical center.

DELIVERY ROOM







LAMP INCUBATOR

STERILIZATION



LABORATORY



REGISTRATION  
AND  
RECEPTION



BED WITH MOSQUITO NETS



Rustic of the new  
midwifery school



Rustic of the new  
midwifery school



Rustic of the new  
midwifery school





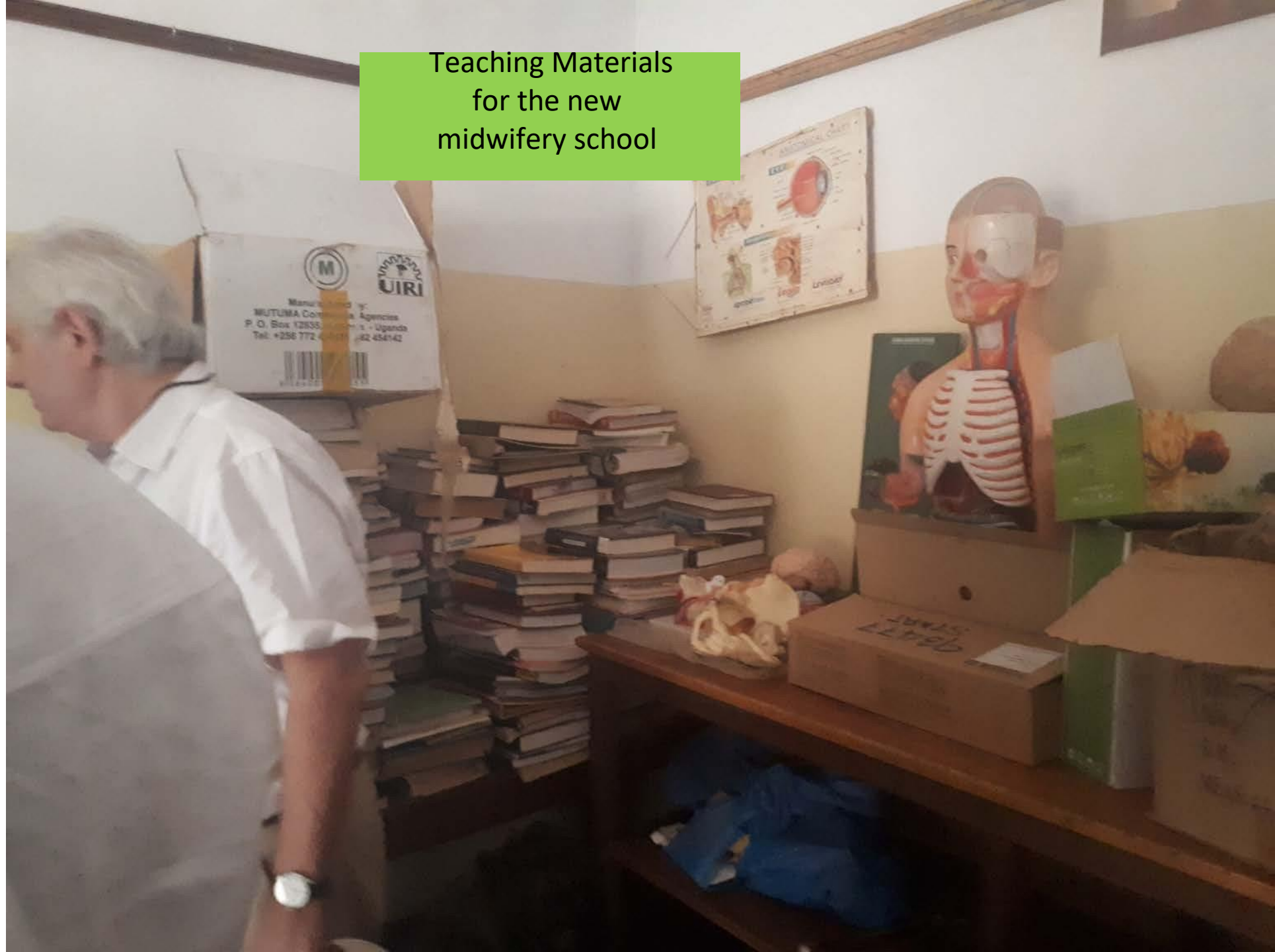
Rustic of the new  
midwifery school



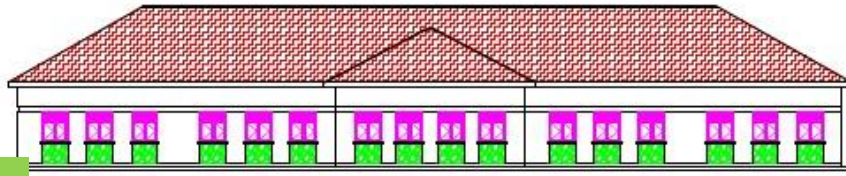


A tree that will grow

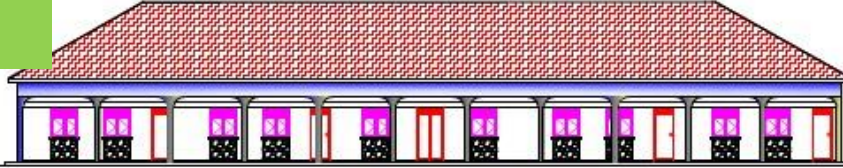
Teaching Materials  
for the new  
midwifery school



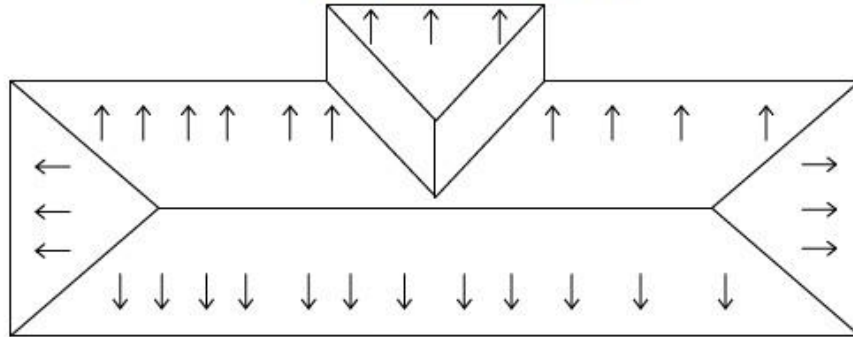
Floor plan of the new midwifery school



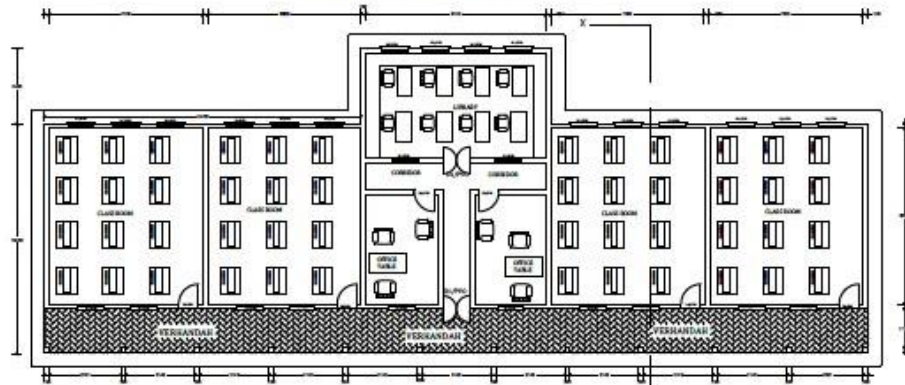
REAR ELEVATION SCALE 1:100



FRONT ELEVATION SCALE 1:100

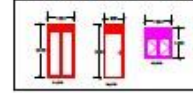


ROOF PLAN SCALE 1:100



GROUND PLAN SCALE 1:100

DOOR & WINDOW SCHEDULES

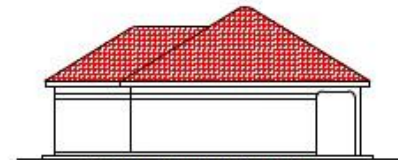


DOOR & WINDOW SCHEDULES

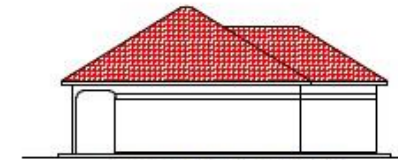


SUPPER-STRUCTURE NOTES

- 25mm cement sand screed (1:3)
- 100mm concrete bed (1:2:4)
- 200mm hardcore on compacted murram
- 230x690mm strip foundation (1:3:6)
- To be laid at least 900mm deep



FRONT ELEVATION SCALE 1:100



FRONT ELEVATION SCALE 1:100

GENERAL NOTES:

- All dimensions are in millimetres unless stated otherwise.
- Thickness of external walls are 150mm and internal walls 100mm unless otherwise stated.
- Foundation depth to be determined on site.
- Smooth cement plaster finishing on internal walls with a approved paint.
- External walls rendered with cement sand mortar (1:3) & finished with "Kajansi" facing bricks

DOOR AND WINDOW SCHEDULES

| MARK   | WIDTH | HEIGHT | NO | DESCRIPTIONS    |
|--------|-------|--------|----|-----------------|
| D1 PVC | 1200  | 2400   | 02 | Steel case door |
| D2 PVC | 800   | 2400   | 04 | Steel case door |
| W1 PVC | 1200  | 1400   | 28 | Steel casement  |

|                   |  |
|-------------------|--|
| APPROVED BY ARCH. | GINA HALUYIMA<br>REG NO. 185<br>PS 199-6721  |
| DRAWN BY          | OTTO SUNDAY 0772683872                       |
| CLIENT            | St. Mark Midwifery and Nurse training School |

FIRM NAME AND ADDRESS  
**Consultant:**  
**POKA**  
**ENG.CO**  
 P.O.BOX 164 KITGUM  
 TEL. 0772683872  
 0782827489

Project Name and Address  
**Building plan for St. Mark**  
**MidWifery and Nurse**  
**training School**  
 constructed at Amida  
 sub-County kitgum District

From  
 Training School  
 Date  
**MARCH, 2016**  
 Scale  
**1:100, 1:75**